



# Chesapeake Sport Pilot

## CARBON-FREE FLIGHT SCHOOL



Chesapeake Sport Pilot is a national leader in sport and private pilot training. Their modern, well-maintained airplanes and highly experienced instructors sets them apart from other schools. Conveniently located outside of the DC area flight restrictions, their facility is located at the beautiful Bay Bridge Airport in Stevensville, Maryland.



The 25.5 kW system will generate clean reliable energy from the sun for decades to come.



Completion of this project makes Chesapeake Sport Pilot the first flight school to be fully solar-powered.

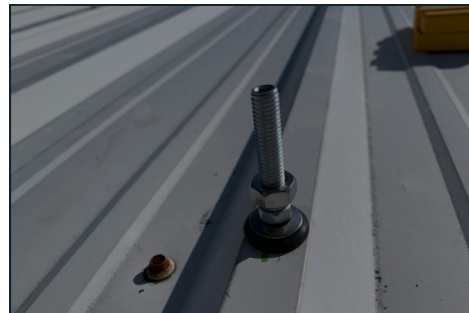
# ROOFTOP SOLAR SYSTEM

## PERFORMANCE



### HIGHLIGHTS

Sport Pilot's new rooftop PV solar system will entirely offset the energy used by the new shop. This system will achieve a break-even in under 4 years and generate clean energy for 25+ years.



### PROJECT OVERVIEW

The rooftop PV system at Chesapeake Sport Pilot was designed using a rail-based racking that was mechanically fastened to the facility's steel building structure. High-efficiency solar modules and module-level power electronics combined with web-accessible monitoring was the perfect combination of technologies to ensure maximum energy harvest.

Capital Solar Group worked with the client to obtain competitive USDA REAP funding, a grant from Maryland Energy Administration's Clean Energy Rebate Program and registered the system to sell Solar Renewable Energy Credits (SRECs).

### SPECS

- 76 Solar Panels
- 2 Solar Inverters
- 25.5 kW System Capacity
- 31,065 kWh Annual Generation

### 25 YEAR PROJECT DATA

- Internal Rate of Return, (IRR) 18.5%
- Return on Investment (ROI) 1.74
- Carbon Dioxide Mitigated 1,186,184 lbs.
- Air Miles Avoided 22,380 Miles



For questions, reach out to [engineering@capitalsolargroup.com](mailto:engineering@capitalsolargroup.com) | 240.229.6809

